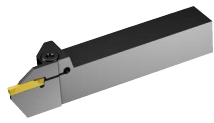
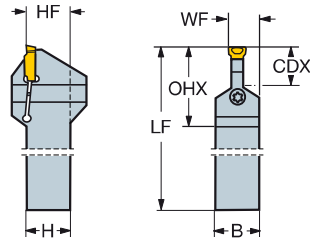


CoroCut® 1-2 schachtgereedschap voor afsteken en groefsteken

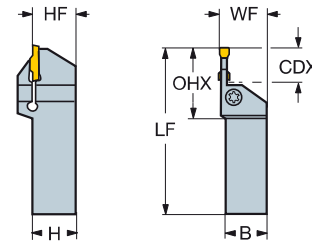
Schroefbevestiging



NF123..B



R/LF123..B



SSC	CZC _{MS}	CDX	OHX	Bestelnummer	Afmetingen, mm						MIID	
					B	H	LF	WF	HF	NM		KG
D	16 x 16	8,0	25,5	R/LF123D08-1616B	16,0	16,0	100,0	17,0	16,0	2,5	0,22	N123D2-0150-0002-CM
	16 x 16	15,0	33,5	R/LF123D15-1616B	16,0	16,0	100,0	17,0	16,0	3,5	0,20	N123D2-0150-0002-CM
	20 x 20	8,0	25,5	R/LF123D08-2020B	20,0	20,0	125,0	21,0	20,0	2,5	0,40	N123D2-0150-0002-CM
	20 x 20	15,0	33,5	R/LF123D15-2020B	20,0	20,0	125,0	21,0	20,0	3,5	0,38	N123D2-0150-0002-CM
	25 x 25	8,0	25,5	R/LF123D08-2525B	25,0	25,0	150,0	26,0	25,0	2,5	0,72	N123D2-0150-0002-CM
	25 x 25	15,0	33,5	R/LF123D15-2525B	25,0	25,0	150,0	26,0	25,0	3,5	0,72	N123D2-0150-0002-CM
E	16 x 16	8,0	25,5	R/LF123E08-1616B	16,0	16,0	125,0	17,0	16,0	2,5	0,26	N123E2-0200-0002-CM
	16 x 16	15,0	33,5	R/LF123E15-1616B	16,0	16,0	125,0	17,0	16,0	4,0	0,25	N123E2-0200-0002-CM
	20 x 20	8,0	25,5	R/LF123E08-2020B	20,0	20,0	125,0	21,0	20,0	2,5	0,38	N123E2-0200-0002-CM
	20 x 20	15,0	33,5	R/LF123E15-2020B	20,0	20,0	125,0	21,0	20,0	4,0	0,36	N123E2-0200-0002-CM
	25 x 25	8,0	25,5	R/LF123E08-2525B	25,0	25,0	150,0	26,0	25,0	2,5	0,72	N123E2-0200-0002-CM
	25 x 25	15,0	33,5	R/LF123E15-2525B	25,0	25,0	150,0	26,0	25,0	4,0	0,69	N123E2-0200-0002-CM
F	16 x 16	10,0	29,0	R/LF123F10-1616B	16,0	16,0	125,0	17,0	16,0	3,0	0,26	N123F2-0250-0002-CM
	16 x 16	20,0	22,4	R/LF123F20-1616B	16,0	16,0	125,0	17,0	16,0	4,0	0,25	N123F2-0250-0002-CM
	20 x 20	10,0	29,0	R/LF123F10-2020B	20,0	20,0	125,0	21,0	20,0	3,0	0,35	N123F2-0250-0002-CM
	20 x 20	20,0	22,4	R/LF123F20-2020B	20,0	20,0	125,0	21,0	20,0	4,0	0,36	N123F2-0250-0002-CM
	25 x 25	10,0	29,0	R/LF123F10-2525B	25,0	25,0	150,0	26,0	25,0	3,0	0,72	N123F2-0250-0002-CM
	25 x 25	20,0	22,4	R/LF123F20-2525B	25,0	25,0	150,0	26,0	25,0	4,0	0,67	N123F2-0250-0002-CM
G	32 x 25	20,0	40,0	R/LF123F20-3225B	25,0	32,0	170,0	26,0	32,0	4,0	0,99	N123F2-0250-0002-CM
	16 x 16	10,0	22,4	R/LF123G10-1616B	16,0	16,0	125,0	17,0	16,0	3,5	0,26	N123G2-0300-0003-TF
	16 x 16	20,0	41,0	R/LF123G20-1616B	16,0	16,0	125,0	17,0	16,0	5,0	0,26	N123G2-0300-0003-TF
	20 x 20	10,0	22,4	R/LF123G10-2020B	20,0	20,0	125,0	21,0	20,0	3,5	0,40	N123G2-0300-0003-TF
	20 x 20	20,0	41,0	R/LF123G20-2020B	20,0	20,0	125,0	21,0	20,0	5,0	0,36	N123G2-0300-0003-TF
	25 x 25	10,0	22,4	R/LF123G10-2525B	25,0	25,0	150,0	26,0	25,0	3,5	0,73	N123G2-0300-0003-TF
H	25 x 25	20,0	41,0	R/LF123G20-2525B	25,0	25,0	150,0	26,0	25,0	5,0	0,68	N123G2-0300-0003-TF
	32 x 25	10,0	30,0	R/LF123G10-3225B	25,0	32,0	170,0	26,0	32,0	3,5	1,05	N123G2-0300-0003-TF
	32 x 25	20,0	41,0	R/LF123G20-3225B	25,0	32,0	170,0	26,0	32,0	5,0	0,99	N123G2-0300-0003-TF
	32 x 32	20,0	41,0	R/LF123G20-3232B	32,0	32,0	170,0	33,0	32,0	5,0	1,24	N123G2-0300-0003-TF
	16 x 16	13,0	34,0	R/LF123H13-1616B	16,0	16,0	125,0	17,0	16,0	4,5	0,21	N123H2-0400-0004-TF
	16 x 16	25,0	47,0	R/LF123H25-1616B	16,0	16,0	125,0	17,0	16,0	7,0	0,26	N123H2-0400-0004-TF
J	20 x 20	13,0	34,0	R/LF123H13-2020BM	20,0	20,0	125,0	21,0	20,0	4,5	0,41	N123H2-0400-0004-TF
	20 x 20	25,0	47,0	R/LF123H25-2020BM	20,0	20,0	125,0	21,0	20,0	7,0	0,39	N123H2-0400-0004-TF
	25 x 25	13,0	34,0	R/LF123H13-2525BM	25,0	25,0	150,0	26,0	25,0	4,5	0,73	N123H2-0400-0004-TF
	25 x 25	25,0	47,0	R/LF123H25-2525BM	25,0	25,0	150,0	26,0	25,0	7,0	0,68	N123H2-0400-0004-TF
	32 x 25	13,0	34,0	R/LF123H13-3225BM	25,0	32,0	170,0	26,0	32,0	4,5	1,05	N123H2-0400-0004-TF
	32 x 25	25,0	47,0	R/LF123H25-3225BM	25,0	32,0	170,0	26,0	32,0	7,0	0,97	N123H2-0400-0004-TF
K	32 x 32	13,0	34,0	R/LF123H13-3232BM	32,0	32,0	170,0	33,0	32,0	4,5	1,31	N123H2-0400-0004-TF
	32 x 32	25,0	47,0	R/LF123H25-3232BM	32,0	32,0	170,0	33,0	32,0	7,0	1,22	N123H2-0400-0004-TF
	20 x 20	13,0	34,0	R/LF123J13-2020BM	20,0	20,0	125,0	21,0	20,0	5,0	0,41	N123J2-0500-0002-CM
	25 x 25	13,0	34,0	R/LF123J13-2525BM	25,0	25,0	150,0	26,0	25,0	5,0	0,73	N123J2-0500-0002-CM
	25 x 25	22,0	30,0	R/LF123J22-2525B	25,0	25,0	150,0	26,0	25,0	6,0	0,70	N123J2-0500-0004-TF
	25 x 25	32,0	57,0	R/LF123J32-2525BM	25,0	25,0	150,0	26,0	25,0	7,5	0,68	N123J2-0500-0002-CM
L	32 x 25	13,0	34,0	R/LF123J13-3225BM	25,0	32,0	170,0	26,0	32,0	5,0	1,05	N123J2-0500-0002-CM
	32 x 25	32,0	57,0	R/LF123J32-3225BM	25,0	32,0	170,0	26,0	32,0	7,5	0,97	N123J2-0500-0002-CM
	32 x 32	13,0	34,0	R/LF123J13-3232BM	32,0	32,0	170,0	33,0	32,0	5,0	1,32	N123J2-0500-0002-CM
	32 x 32	32,0	57,0	R/LF123J32-3232BM	32,0	32,0	170,0	33,0	32,0	7,5	1,21	N123J2-0500-0002-CM

SSC = Moet overeenkomen met SSC op wisselplaat.

R = Rechts, L = Links

